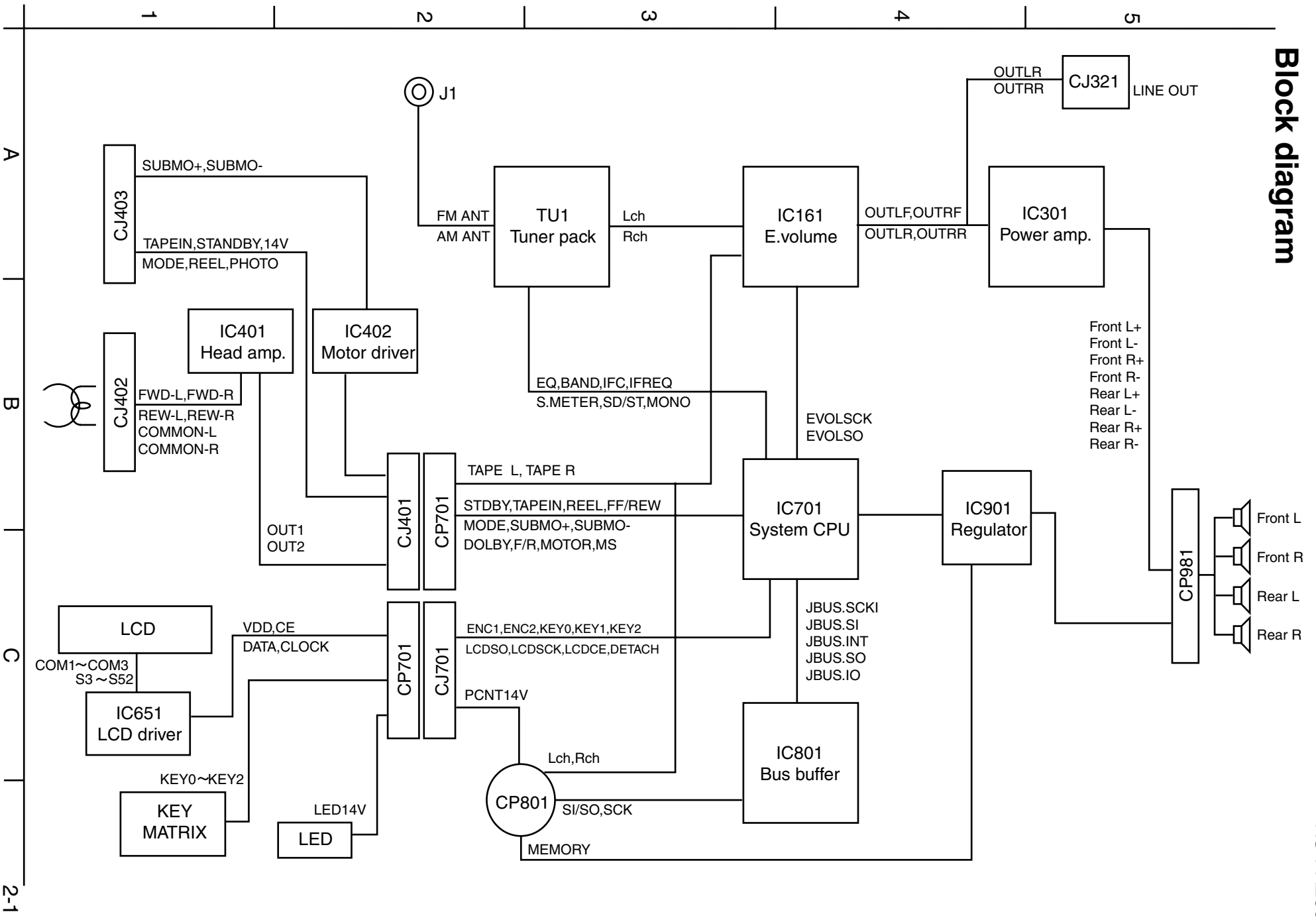


# Block diagram



< M E M O >

# Standard schematic diagrams

## Tuner & Main amp section

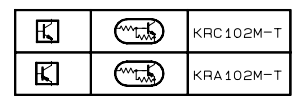
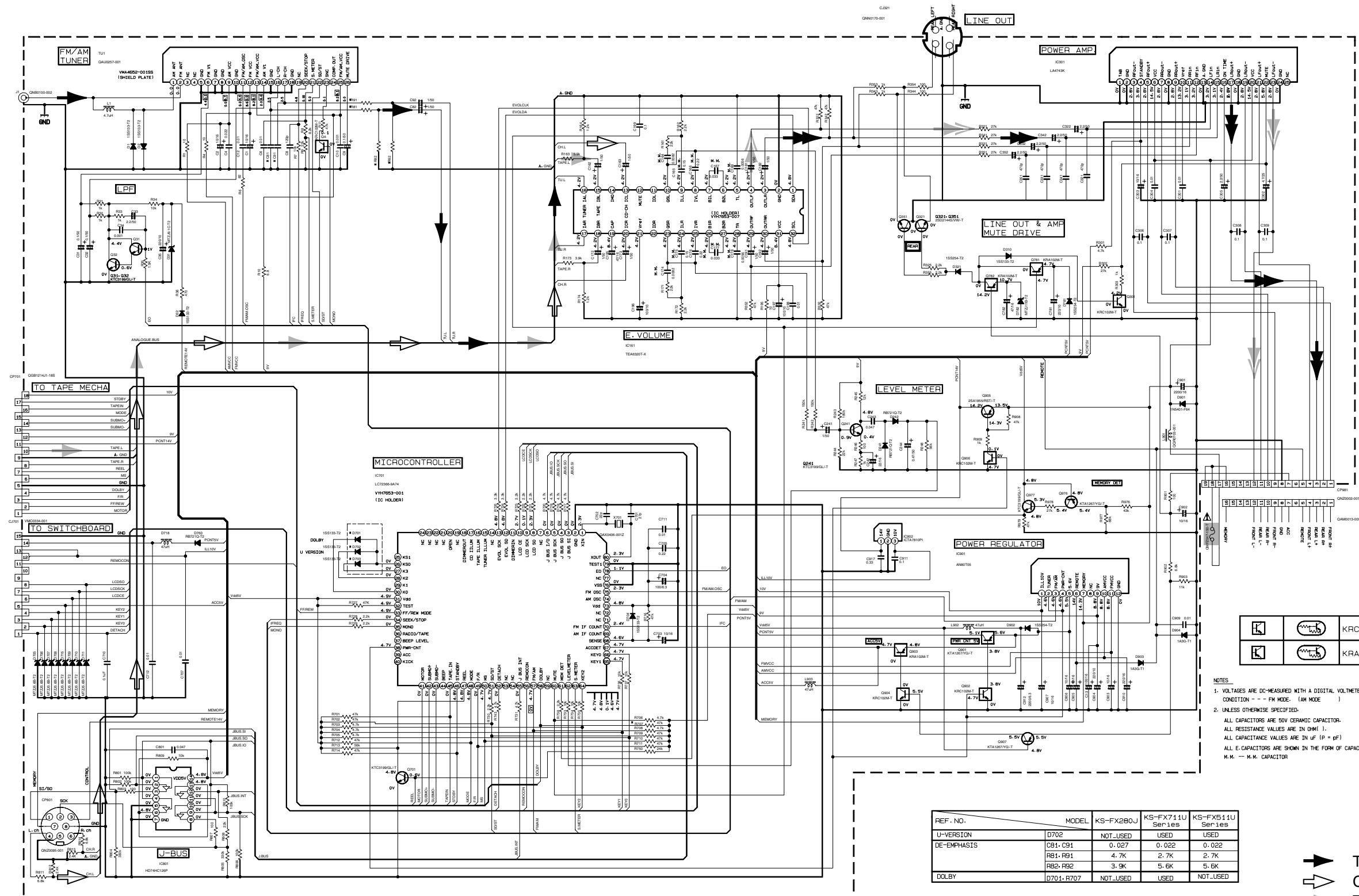
5

4

3

2

1



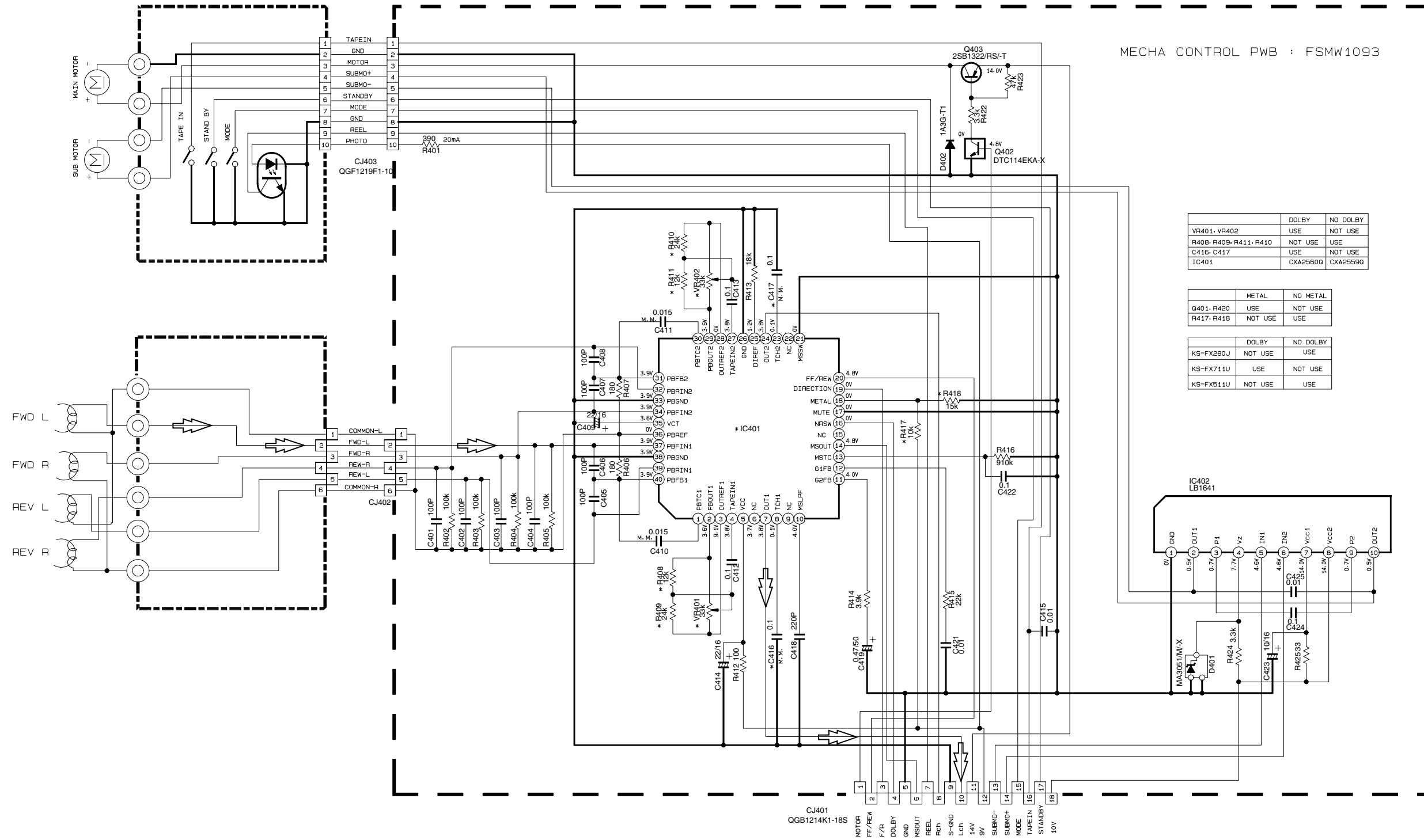
**NOTES**  
 1. VOLTAGES ARE DC-MEASURED WITH A DIGITAL VOLT-METER WITHOUT INPUT SIGNAL. CONDITION - - - FM MODE. (AM MODE)  
 2. UNLESS OTHERWISE SPECIFIED:  
 ALL CAPACITORS ARE 50V CERAMIC CAPACITOR.  
 ALL RESISTANCE VALUES ARE IN OHM (Ω).  
 ALL CAPACITANCE VALUES ARE IN μF (μF) / RATED VOLTAGE.  
 M.M. — M.M. CAPACITOR

REF. NO.	MODEL	KS-FX280J	KS-FX711U SER.1-8S	KS-FX511U SER.1-8S
U-VERSION	D702	NOT_USED	USED	USED
DE-EMPHASIS	C81-C91	0.027	0.022	0.022
	R81-R81	4.7K	2.7K	2.7K
	R82-R82	3.9K	5.6K	5.6K
DOLBY	D701-R707	NOT_USED	USED	NOT_USED

⚠ Parts are safety assurance parts. When replacing those parts make sure to use the specified one.

- ➔ Tuner signal
- CD changer signal
- Tape signal
- Front signal
- Rear signal

Head amp.Mecha control section



MECHA CONTROL PWB : FSMW1093

	DOLBY	NO DOLBY
VR401, VR402	USE	NOT USE
R408, R409, R411, R410	NOT USE	USE
C416, C417	USE	NOT USE
IC401	CXA2560Q	CXA2559Q

	METAL	NO METAL
G401, R420	USE	NOT USE
R417, R418	NOT USE	USE

	DOLBY	NO DOLBY
KS-FX280J	NOT USE	USE
KS-FX711U	USE	NOT USE
KS-FX511U	NOT USE	USE

NOTES

- VOLTAGES ARE DC-MEASURED WITH A DIGITAL VOLT METER WITHOUT INPUT SIGNAL. CONDITION----TAPE MODE.
- UNLESS OTHERWISE SPECIFIED.
  - ALL RESISTORS ARE 1/4W ±5% OR 1/10W ±5% METAL GLAZE RESISTOR.
  - ALL CAPACITORS ARE 50V CERAMIC CAPACITOR.
  - ALL RESISTANCE VALUES ARE IN OHM(Ω).
  - ALL CAPACITANCE VALUES ARE IN pF(pF).
  - ALL E. CAPACITORS ARE SHOWN IN THE FORM OF CAPACITANCE(±F1/RATED VOLTAGE(V)).
  - M. M. -- M. M. CAPACITOR

Lch signal

5

4

3

2

1

A

B

C

2-4

D

E

F

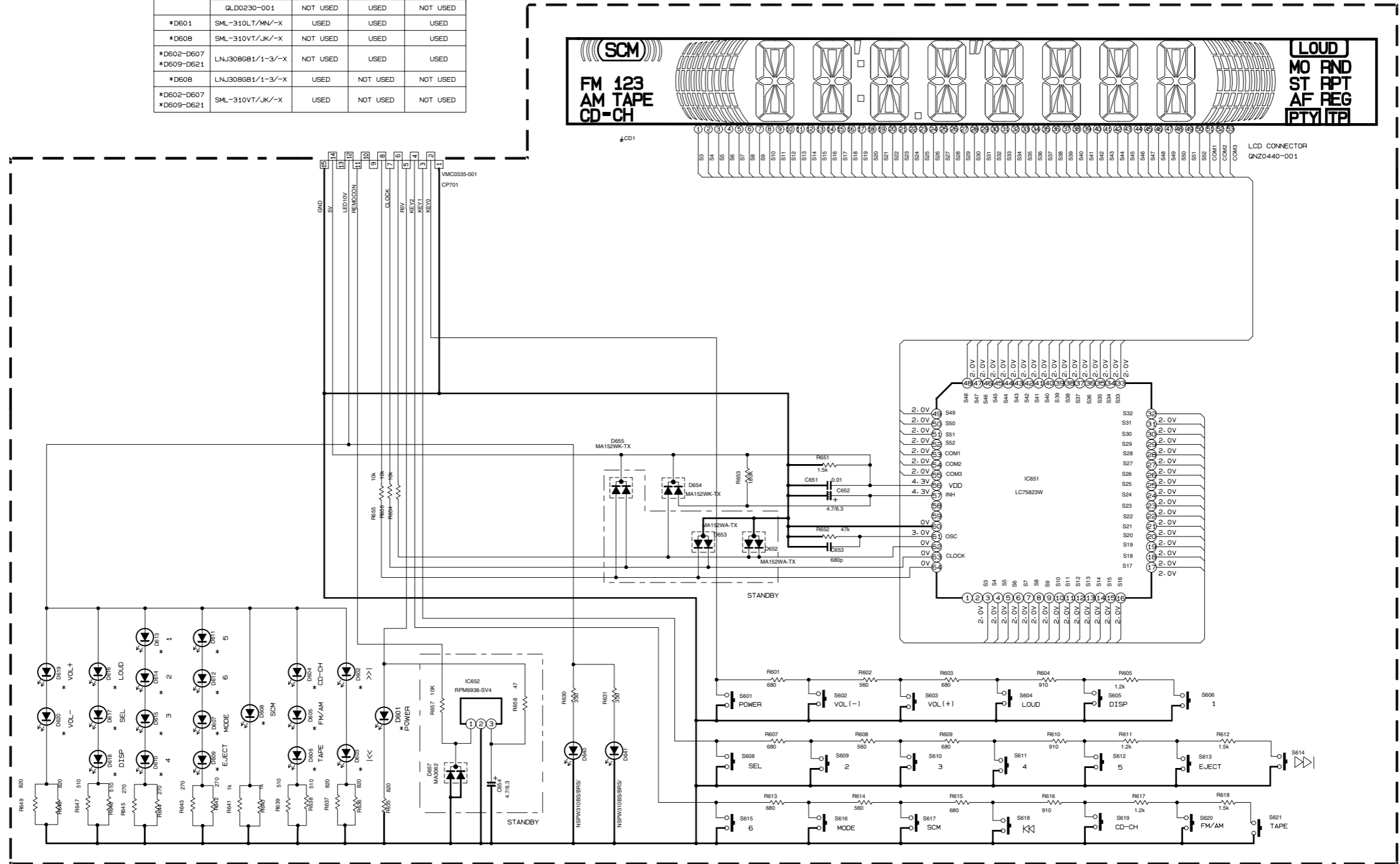
G

H

■ LCD & Key control section

- NOTES**
1. VOLTAGES ARE DC-MEASURED WITH A DIGITAL VOLT METER WITHOUT INPUT SIGNAL.  
CONDITION - - - FM MODE
  2. UNLESS OTHERWISE SPECIFIED:  
ALL RESISTORS ARE 1/4W 5% CARBON RESISTOR OR 1/4W 1/10W 5% METAL GLAZE RESISTOR.  
ALL CAPACITORS ARE 50V CERAMIC CAPACITOR.  
ALL RESISTANCE VALUES ARE IN OHM (Ω ).  
ALL CAPACITANCE VALUES ARE IN μ F (P=pF).  
ALL E-CAPACITORS ARE SHOWN IN THE FORM OF CAPACITANCE(μ F) / RATED VOLTAGE(V).

REF. NAME	PART NO.	KS-FX280J	KS-FX711U	KS-FX511U
*LCD1	QLD0218-001	USED	NOT USED	NOT USED
	QLD0211-002	NOT USED	NOT USED	USED
	QLD0230-001	NOT USED	USED	NOT USED
*D601	SML-310LT/MN/-X	USED	USED	USED
*D60B	SML-310VT/JK/-X	NOT USED	USED	USED
*D602-D607	LNJ308G81/1-3/-X	NOT USED	USED	USED
*D608	LNJ308G81/1-3/-X	USED	NOT USED	NOT USED
*D602-D607	SML-310VT/JK/-X	USED	NOT USED	NOT USED
*D609-D621	SML-310VT/JK/-X	USED	NOT USED	NOT USED



5

4

3

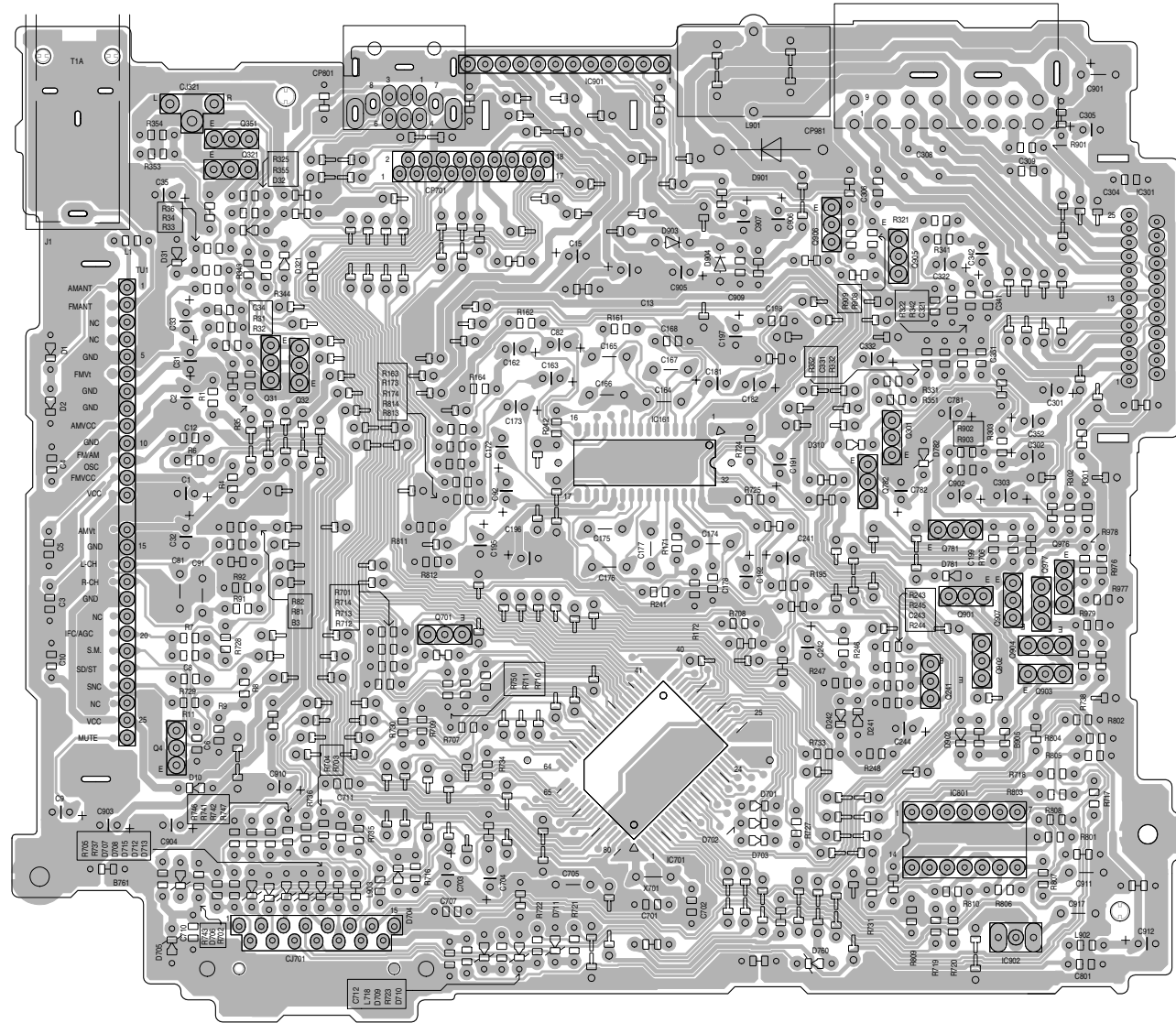
2

1

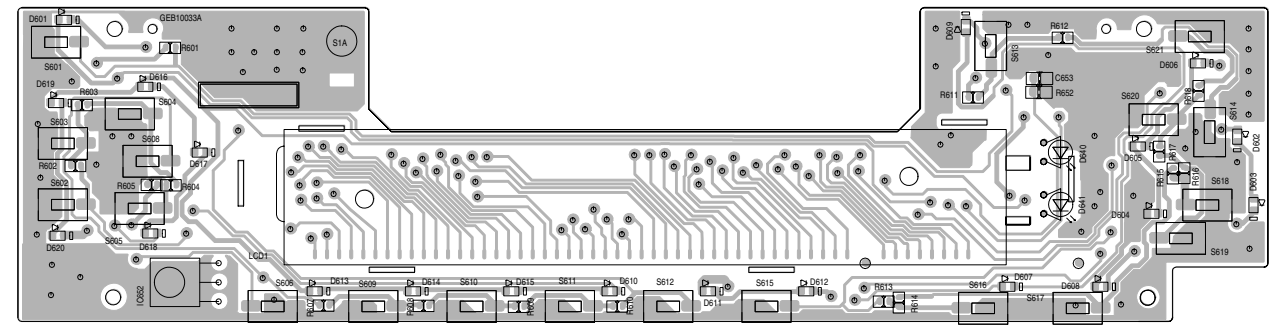
A | B | C | D | E | F | G

# Printed circuit boards

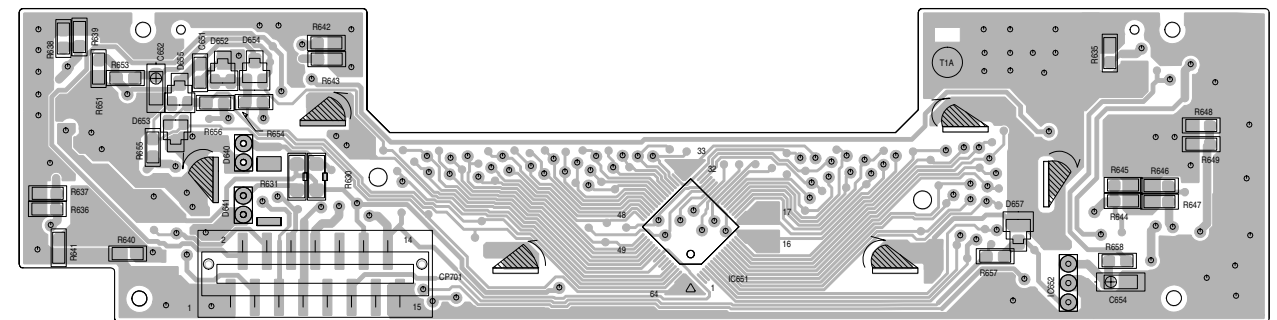
## ■ Main board



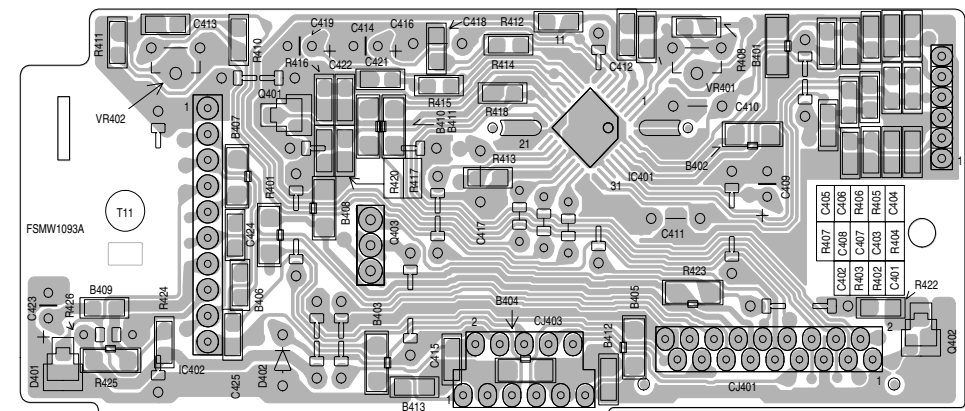
## ■ Front board(Forward side)



## ■ Front board(Reverse side)



## ■ Mecha control board



5

4

3

2

1

A

B

C

2-6

D

E

F

G

H